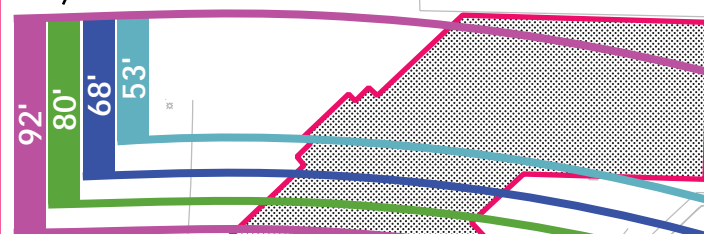


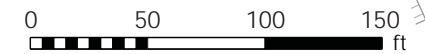
Note: These colors are not related to the alignment colors.



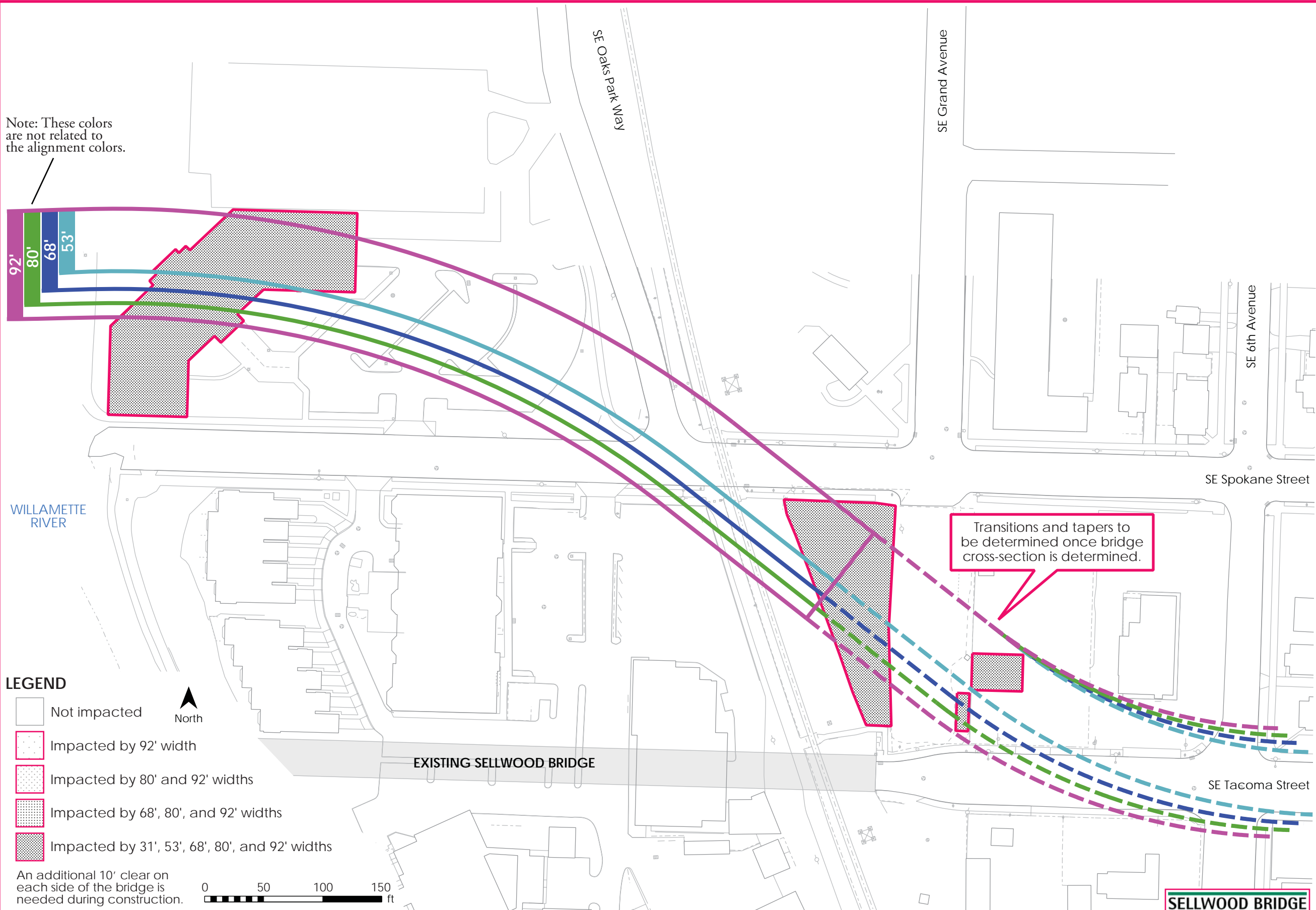
LEGEND

- Not impacted
- Impacted by 92' width
- Impacted by 80' and 92' widths
- Impacted by 68', 80', and 92' widths
- Impacted by 31', 53', 68', 80', and 92' widths

An additional 10' clear on each side of the bridge is needed during construction.



Transitions and tapers to be determined once bridge cross-section is determined.



Eastside Impacts
Pink Alignment Footprint

