

## Scoping Open House

---

DATE: October 25, 2006  
TIME: 5:00 to 8:00 P.M.  
LOCATION: Oaks Park Dance Pavilion



The first public open house for the Sellwood Bridge project (the Scoping Open House) was held on Wednesday, October 25, 2006 from 5:00 to 8:00 p.m. at the Oaks Park Dance Pavilion in Sellwood. The meeting had a drop-in open house format with an ongoing orientation program. 181 people signed in as attending the meeting, which had been publicized through a mass mailing to 23,000 households in the project vicinity as well as through the media.

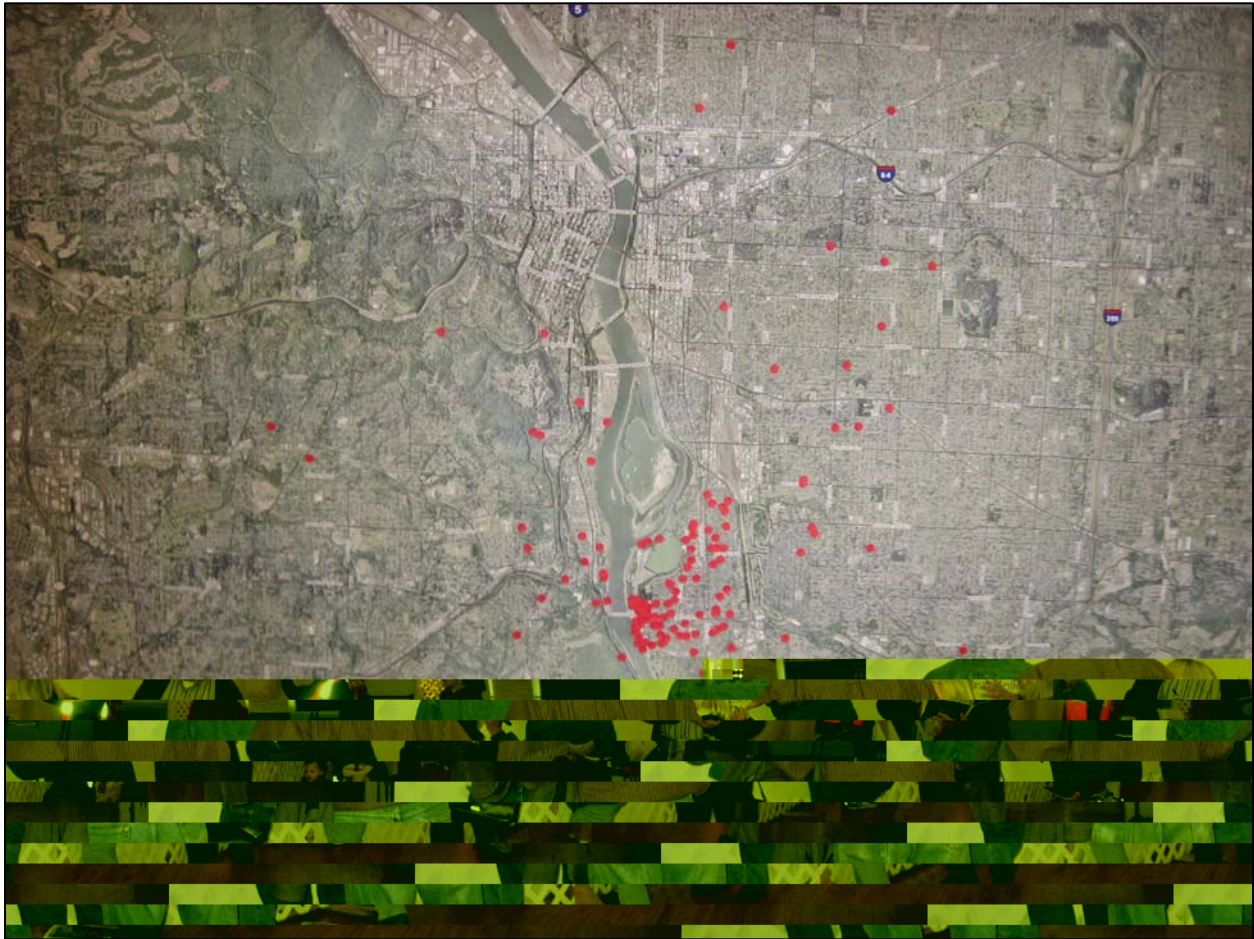
The purpose of the scoping open house was to provide participants with an overview of the project, obtain feedback on the draft Purpose & Need statement, and hear community issues and concerns to inform the alternatives development process for the Sellwood Bridge EIS. The open house included a PowerPoint presentation that ran continuously throughout the meeting as part of a brief orientation program. The meeting was staffed by members of the consulting team and staff members with Multnomah County, Metro, PDOT, and ODOT.

Eight stations of information were available including:

- Sign-in Table
- Orientation
- Bridge Problems
- Travel Patterns
- Issues Wall
- Purpose & Need/NEPA
- Project Website
- Sellwood Bridge History and Memories

There was also a resource table, refreshments, and children's play area with bridge activities available. A cross-section of the existing bridge was marked on the floor in blue tape. Participants were asked to sign in and were provided a folder with information about the meeting, a map to the room, and colored dots to vote on issues at the Issues Wall. They were also asked to place a small red dot on a map showing where they lived. The placement of the

red dots indicated that a majority of the meeting participants came from the immediate Sellwood neighborhood.



Participants were also asked to fill out a comment form, complete a hard copy version of the online survey if they hadn't already taken that, jot their thoughts down on flip pads located at each of the stations, and write their issues and concerns on the Issues Wall. After noting their Issues Wall comments, participants were instructed to use their five blue dots to vote on the issues that were most important to them.

#### ISSUES WALL TOPIC AREAS

- Commuter Access
- Business/Shopping Access
- Neighborhood Access
- Freight/Delivery Access
- Transit
- Bike/Pedestrian Access
- Neighborhood Livability
- Bridge Design/Aesthetics
- Visual Resources
- Funding
- Private Property Impacts
- Historic Resources



### Meeting Overview

Overall, meeting participants were complimentary of the meeting format; they seemed to enjoy the variety of opportunities to provide their comments and interact with staff. The Issues Wall was especially popular. People enjoyed being able to read the comments of others and to vote on their top issues.

Issues of top concern from the Issues Wall, flip charts and comment forms included:

- Making the bridge and approaches safer for all users
- Providing better bicycle/pedestrian access and connections to area trails
- Maintaining neighborhood livability\*
- Restoring bus transit on the bridge and/or accommodating future light rail/streetcar
- Building with the future in mind; ensuring adequate bridge capacity for all users

Other top issues outside of the scope of the Sellwood Bridge study included:

- Building a new bridge elsewhere (between I-205 and the Sellwood Bridge)
- Framing the issue as a Clackamas County problem
- Making the Sellwood a bike/ped only bridge

