



Sellwood Bridge Replacement /Rehabilitation

Property Owners Briefing

May 28, 2008



Agenda

- Update Progress and Schedule
- Report Right of Way changes
- Report Detour route change

Decision Process



We are here:

Prepare Draft EIS

Draft Environmental Impact Statement

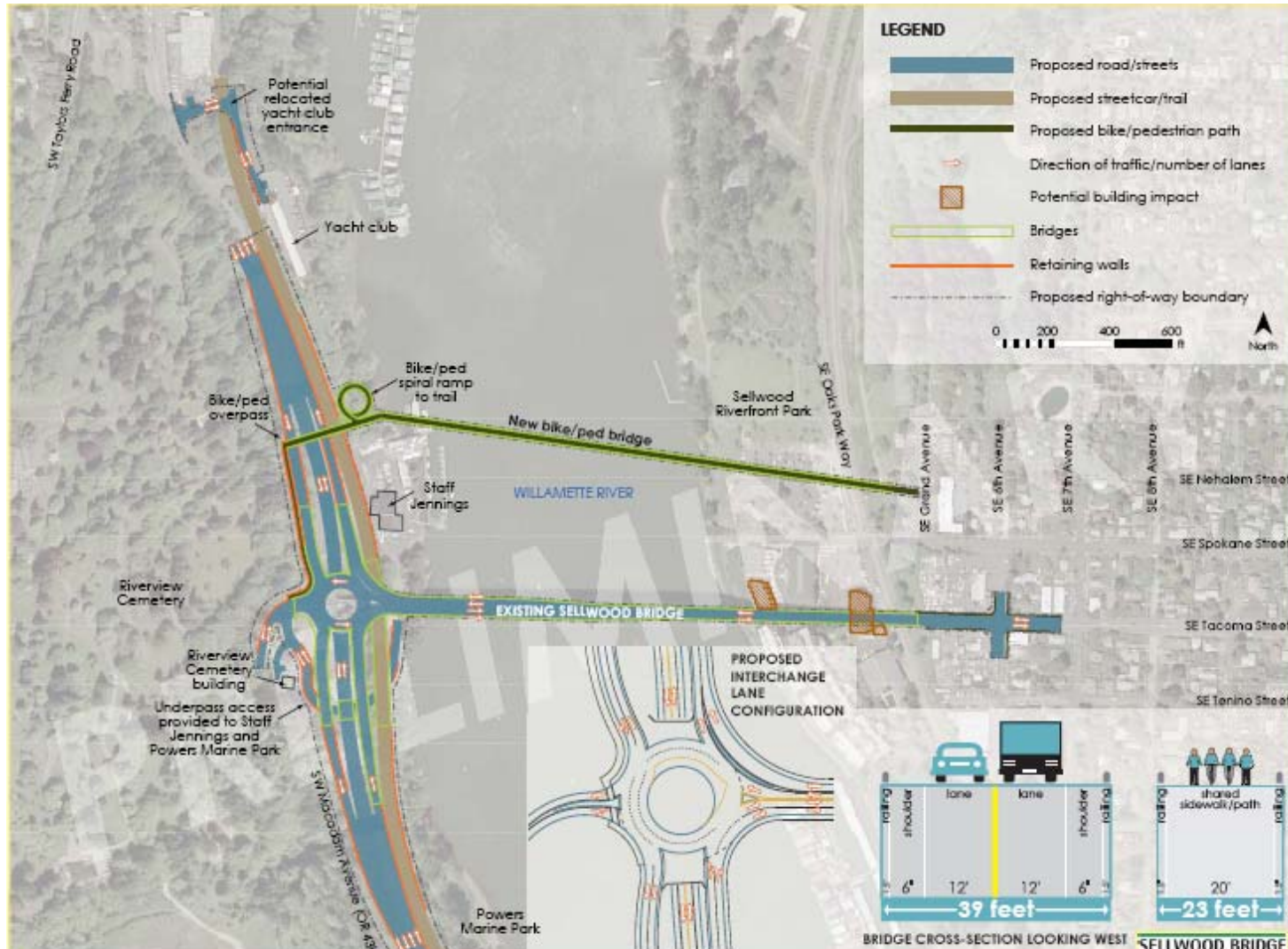
- Air Quality
- Archeological Survey
- Bicyclists and Peds
- Biological Resources
- Construction Impacts
- Economic Impacts
- Energy Usage
- Environmental Justice
- Geological Issues
- Hazardous Materials
- Historic / Architectural
- Hydraulics
- Land Use
- Noise Study
- Right-of-Way
- Section 4(f) Public Lands
- Social Impacts
- Transportation
- Utilities
- Visual Resources
- Water Resources
- Wetlands

Next Steps

- Publish Draft EIS August, 2008
- Seek Public Input on DEIS Fall, 2008
- CTF recommendation November, 2008
- PAG recommendation November, 2008
- Multnomah County, City of Portland
and Metro vote on
Locally Preferred Alternative December, 2008

Alternative A

- Bridge rehabilitation
- 39-foot cross-section
- Separate 20-foot wide bicycle/pedestrian-only bridge
- Stress Ribbon or Cable Stay Bridge Type
- Grade-Separated roundabout on the west side
- No Detour



Alternative A: Rehabilitation with Separate Bike/Ped Bridge

Alt. A West End

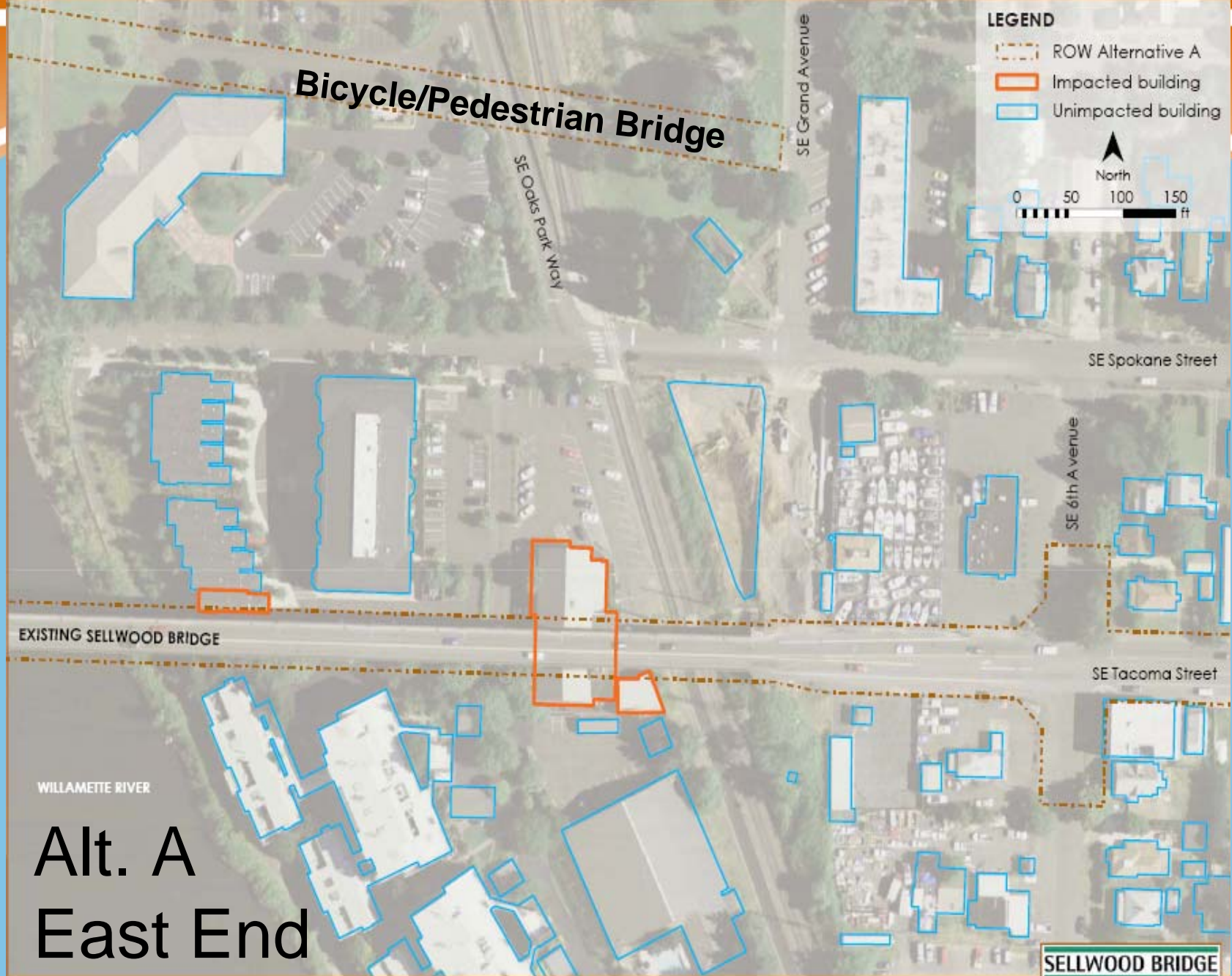


FIGURE 4-2
Alternative A ROW Building Impacts: West Side

Alt. A West End

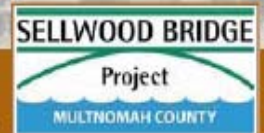


FIGURE 4-2
Alternative A ROW Building Impacts: West Side, South



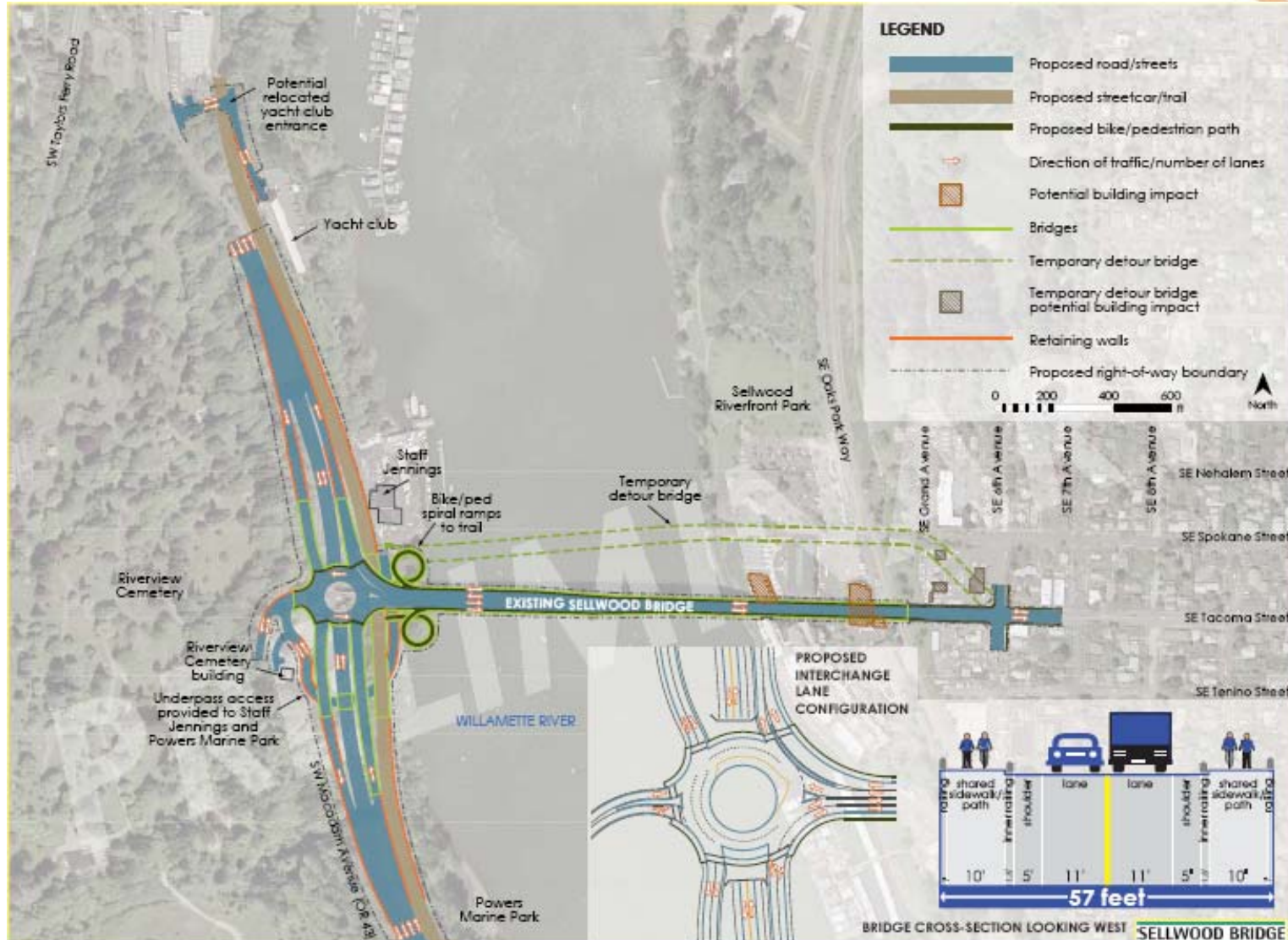
Alt. A
East End

FIGURE 4-1
Alternative A ROW Building Impacts: East Side



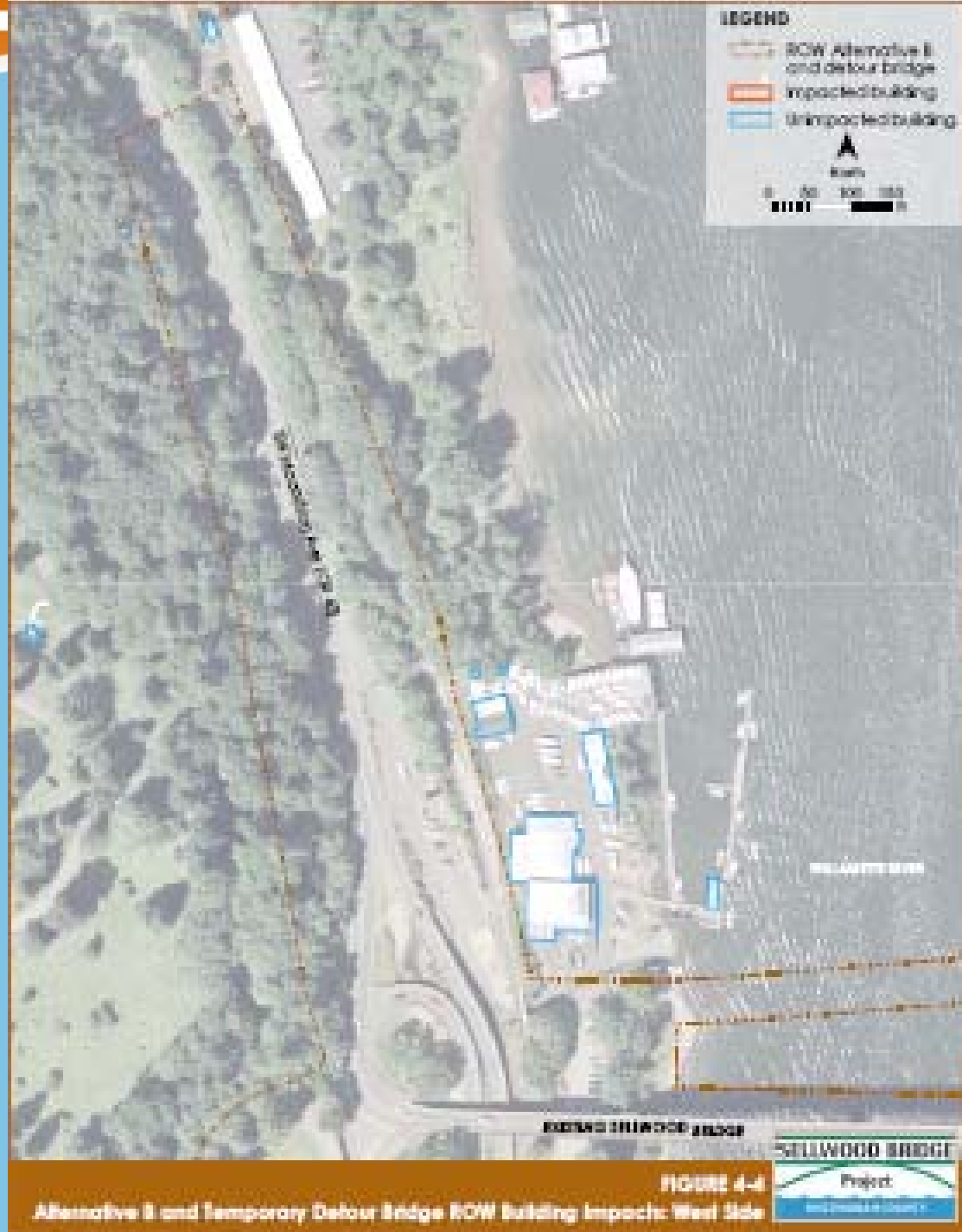
Alternative B

- Bridge rehabilitation
- 57-foot cross-section
- Grade-Separated Roundabout on the west side
- East end – No change
- Detour Bridge



Alternative B: Rehabilitation Bridge with Temporary Detour Bridge

Alt. B West End



Alt. B West End

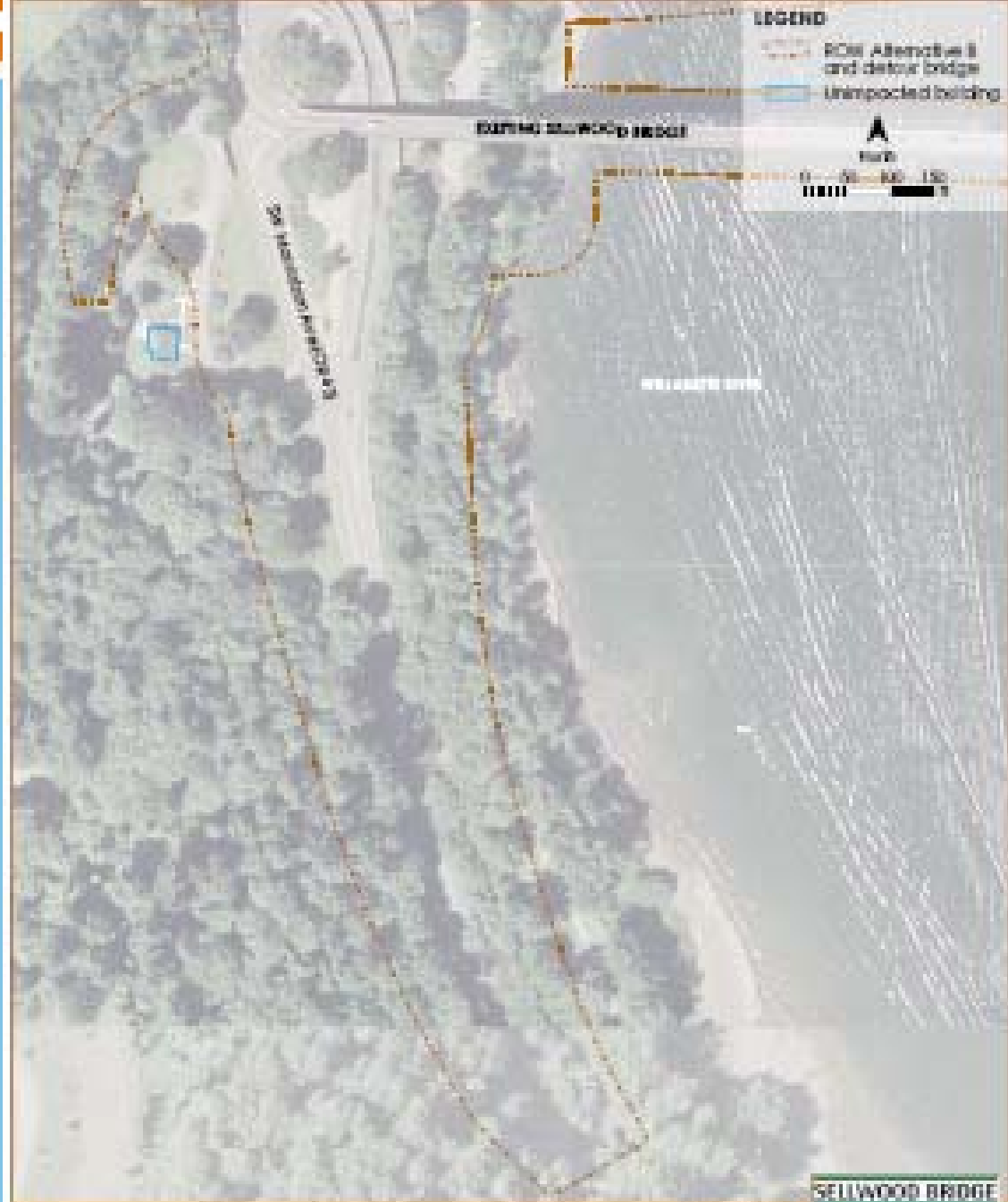


FIGURE 4-8
Alternative B and Temporary Detour Bridge ROW Building Impacts: West Side, South

LEGEND

- ROW Alternative B and detour bridge
- ▭ Impacted building
- ▭ Unimpacted building

North

0 50 100 150 ft

Detour Bridge Alignment

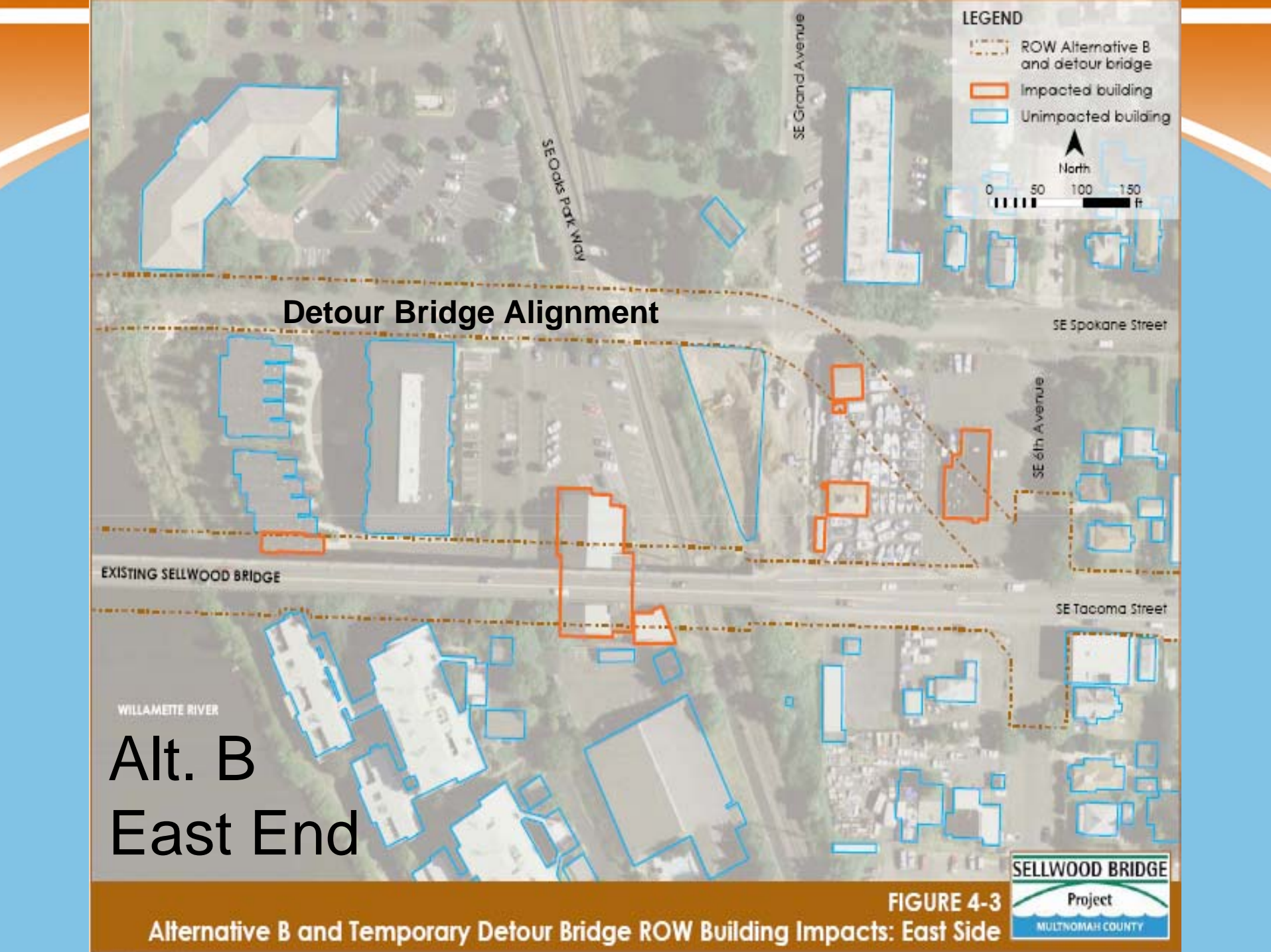
EXISTING SELLWOOD BRIDGE

WILLAMETTE RIVER

**Alt. B
East End**

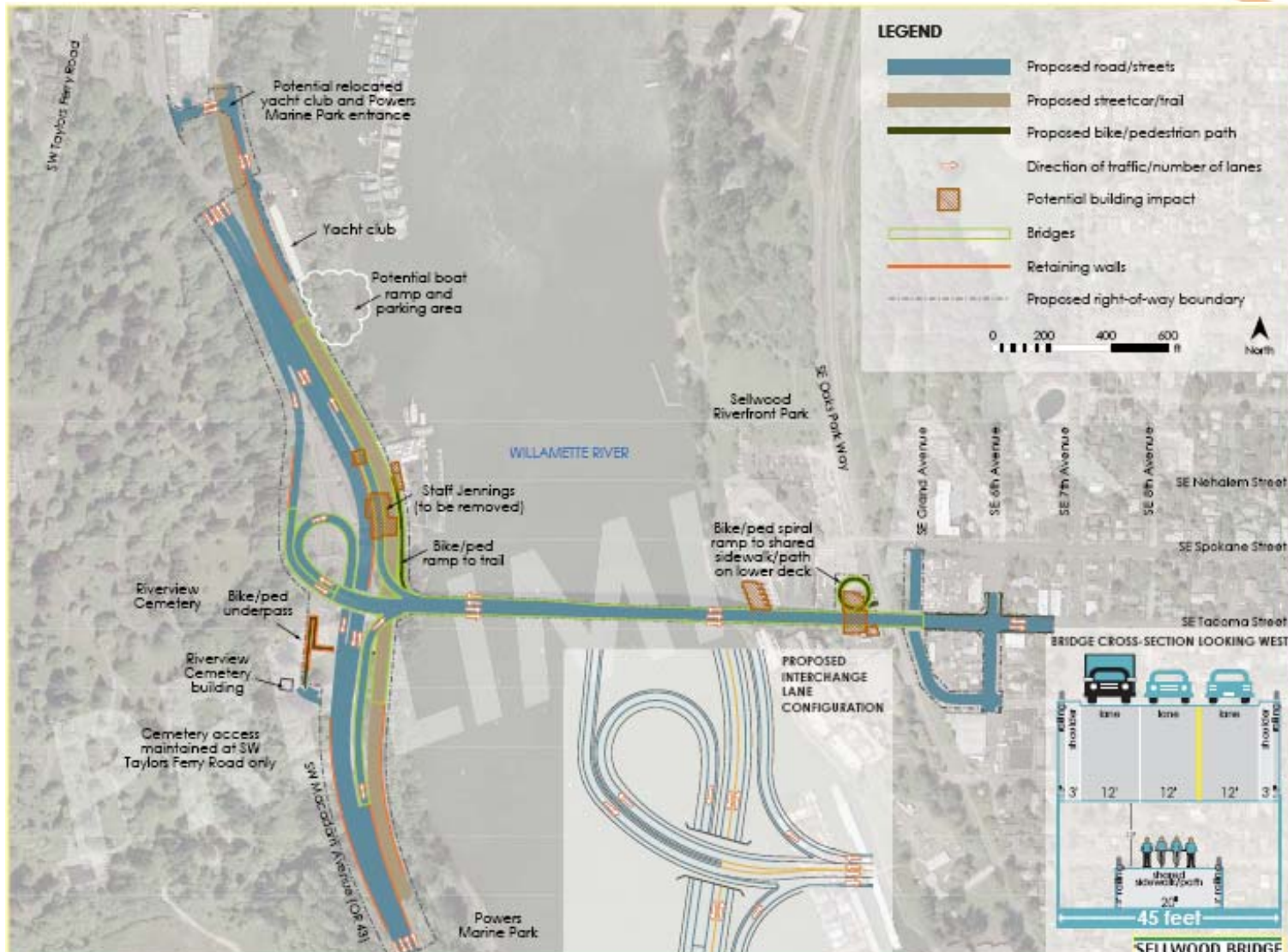
SELLWOOD BRIDGE
Project
MULTNOMAH COUNTY

**FIGURE 4-3
Alternative B and Temporary Detour Bridge ROW Building Impacts: East Side**



Alternative C

- Bridge replacement
- Thru Arch
- Double Deck
- 3 Lanes on upper deck, 20-foot shared use path on lower deck
- Trumpet interchange
- East Side loop and underpass
- No Detour



Alternative C: Replacement Bridge on Existing Alignment

Alt. C West End



FIGURE 4-6
Alternative C ROW Building Impacts: West Side



Alt. C West End

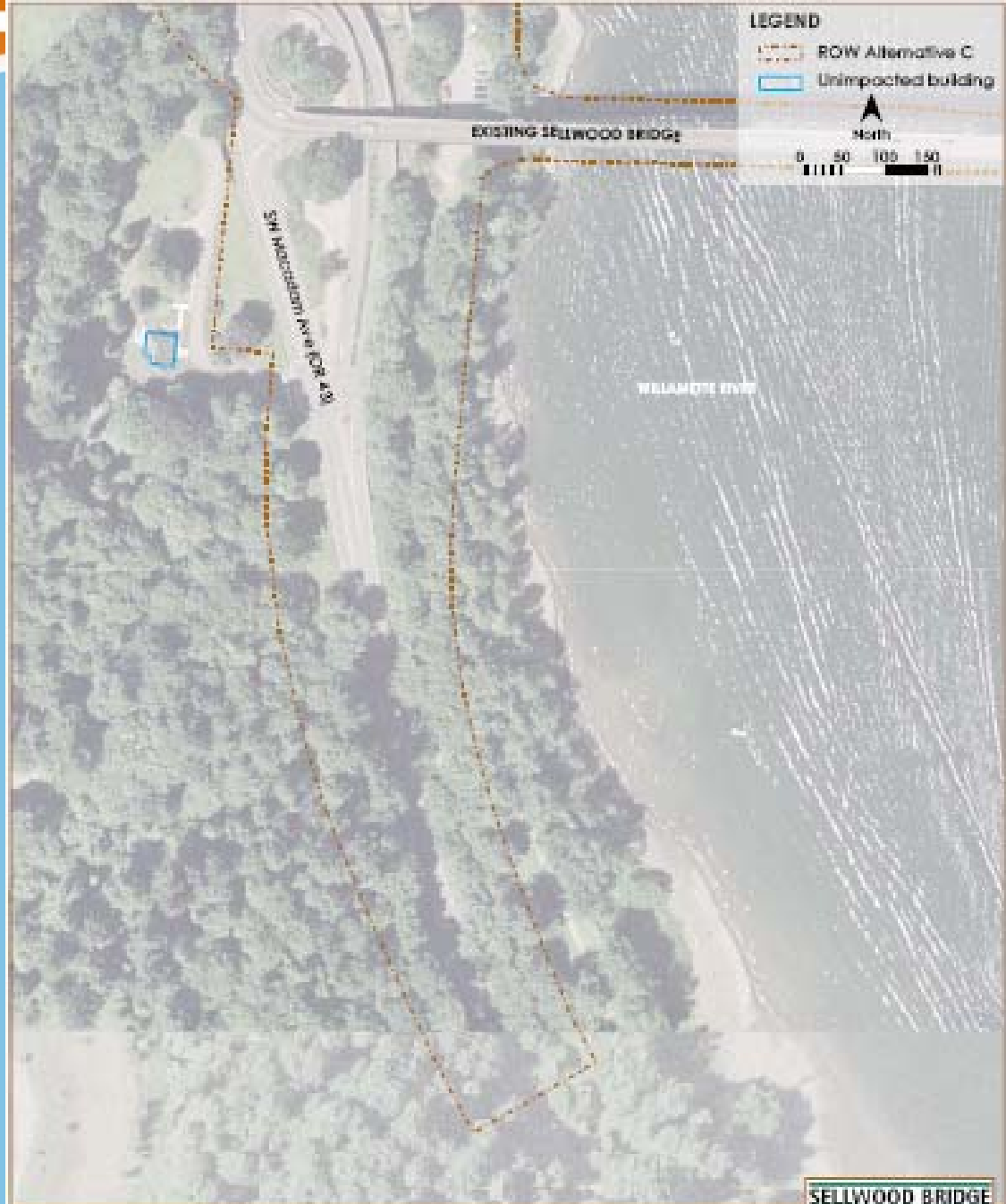
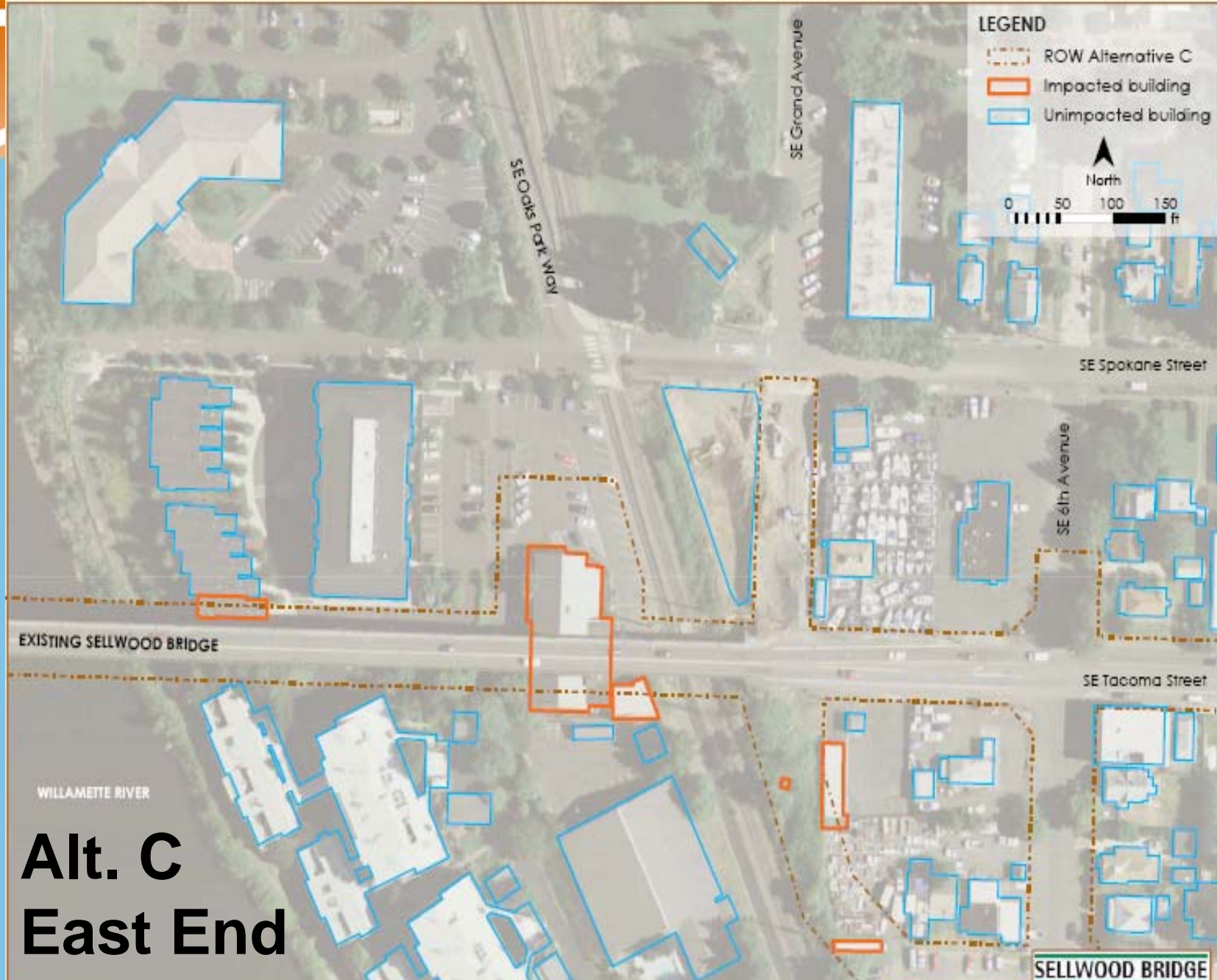


FIGURE 4-8
Alternative C ROW Building Impacts: West Side, South





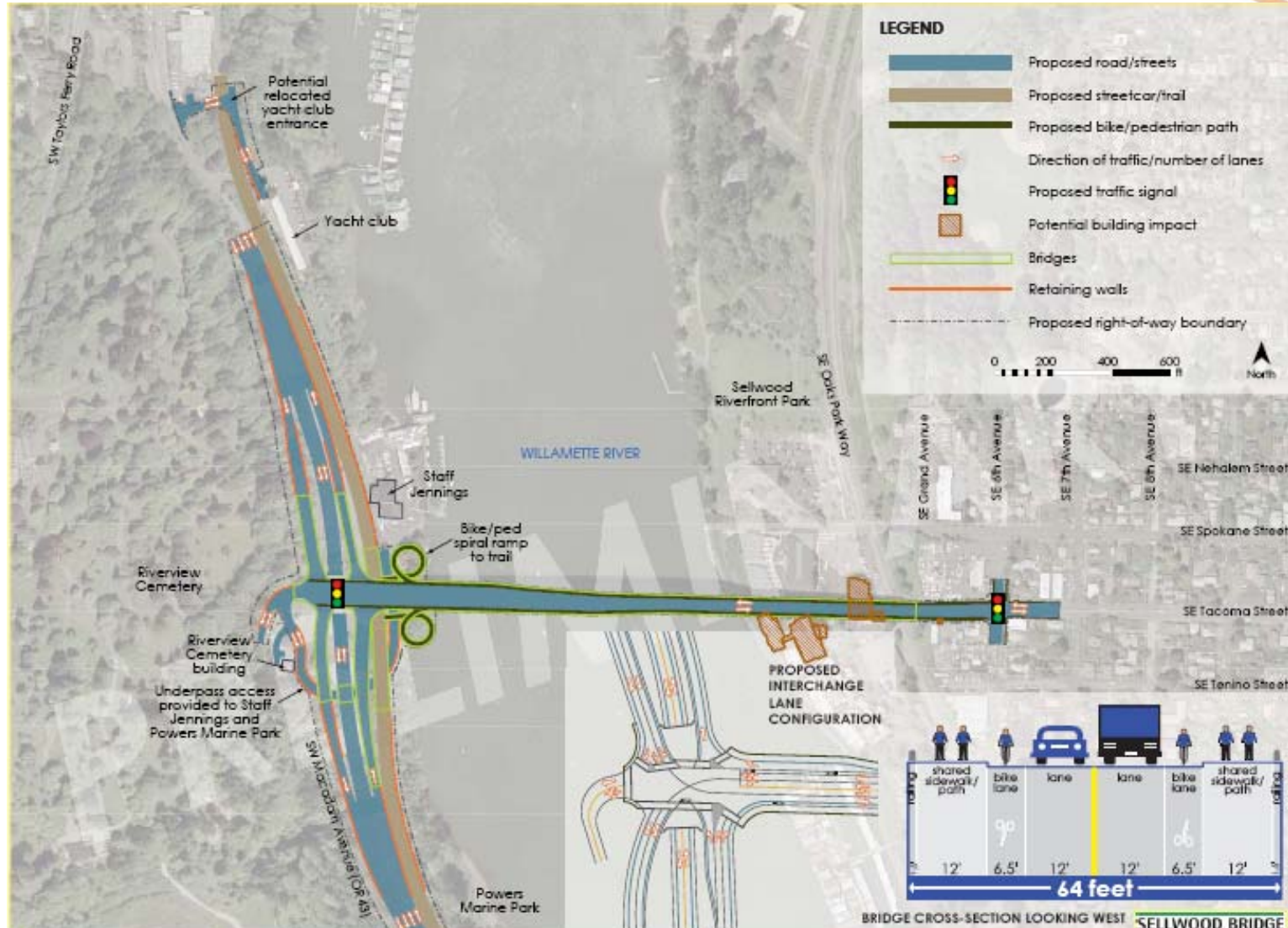
Alt. C East End

FIGURE 4-5
Alternative C ROW Building Impacts: East Side



Alternative D

- Bridge replacement
- Deck Arch or Delta Frame
- 2-Lane with 6.5' bike lanes, 12' sidewalks
- Grade Separated Signalized interchange
- East end Signal
- Staged Construction



Alternative D: Replacement Bridge, Widened to the South

Alt. D West End



FIGURE 4-8
Alternative D ROW Building Impacts: West Side



Alt. D West End

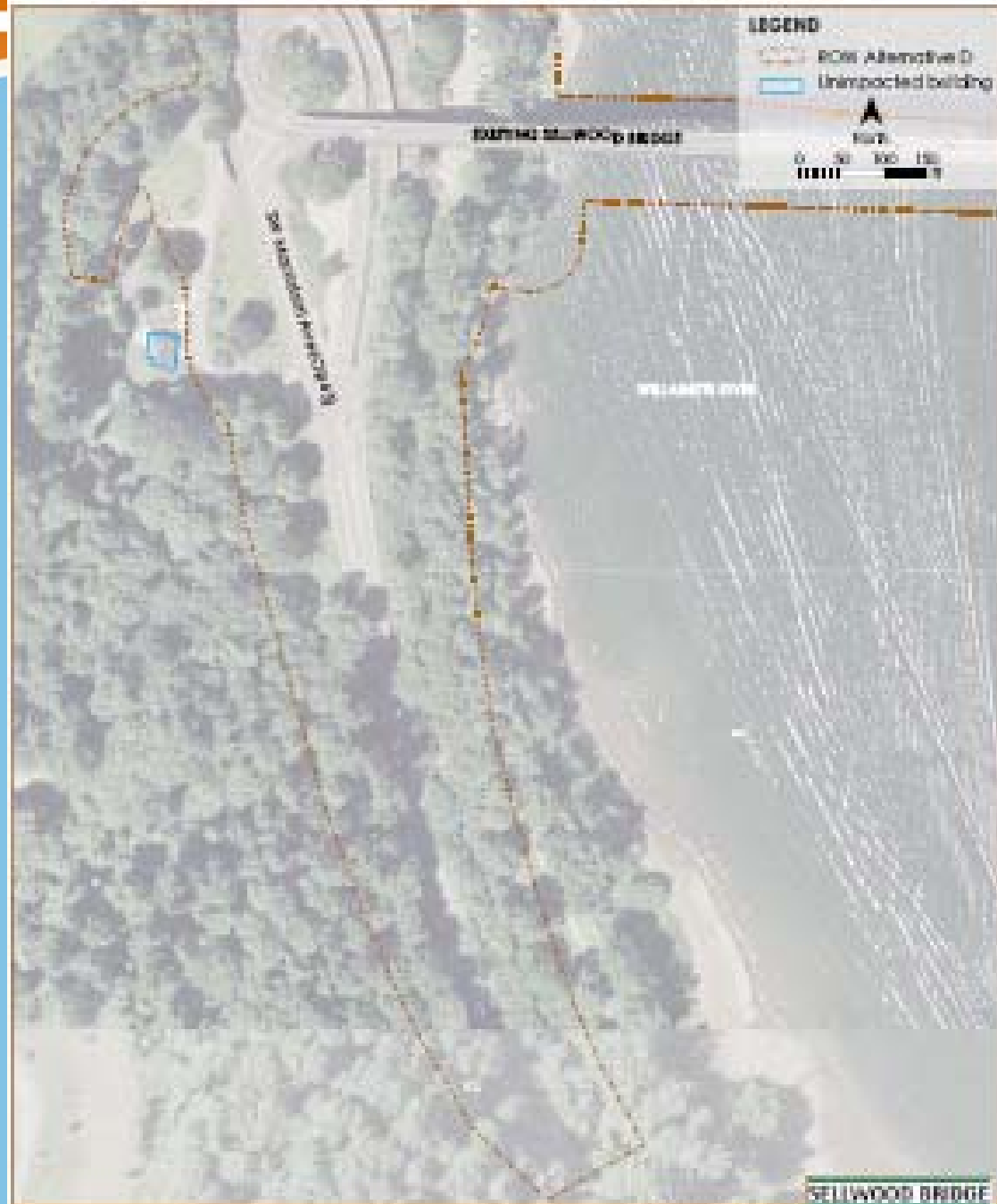
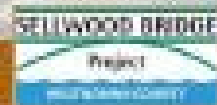
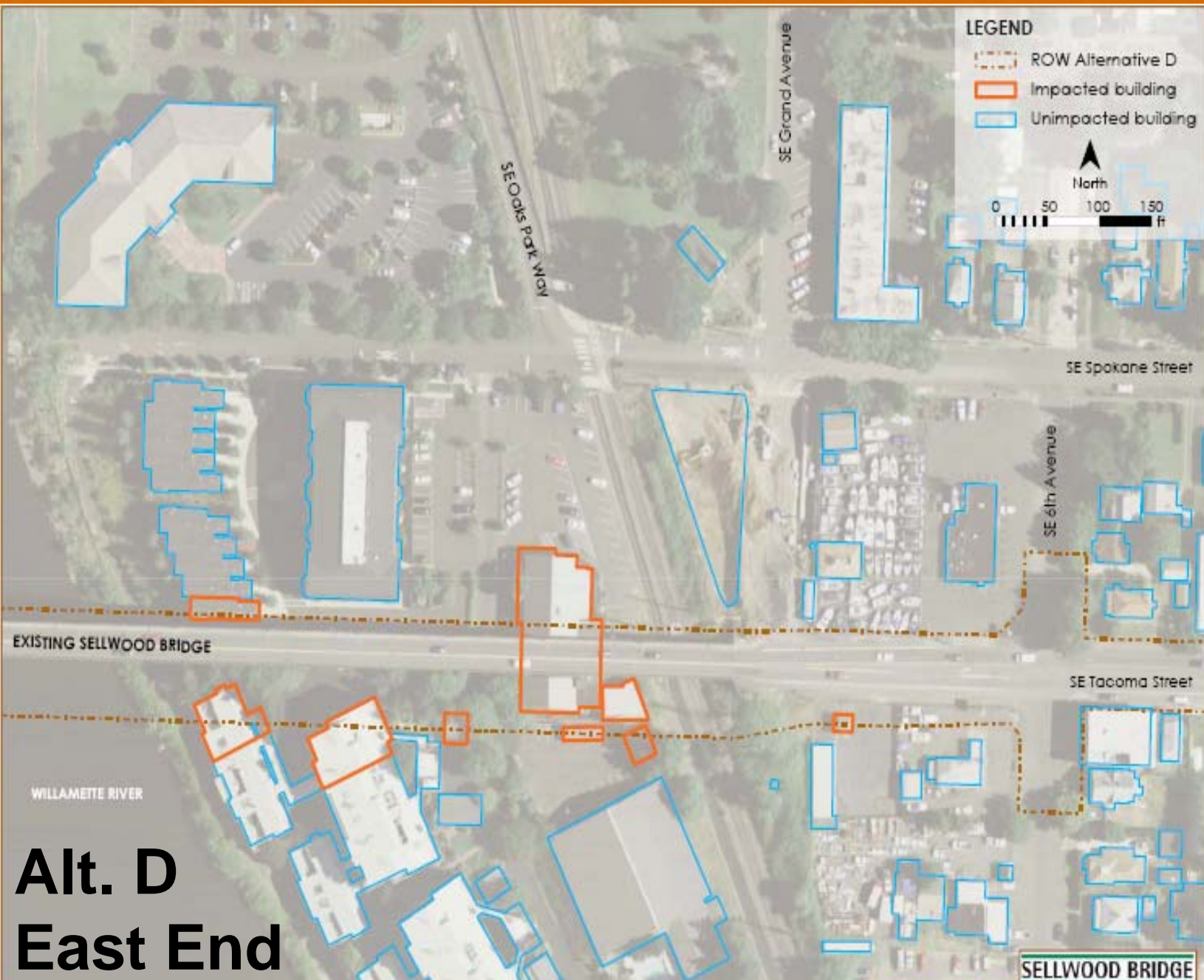


FIGURE 4-11
Alternative D ROW Building Impacts: West Side, South





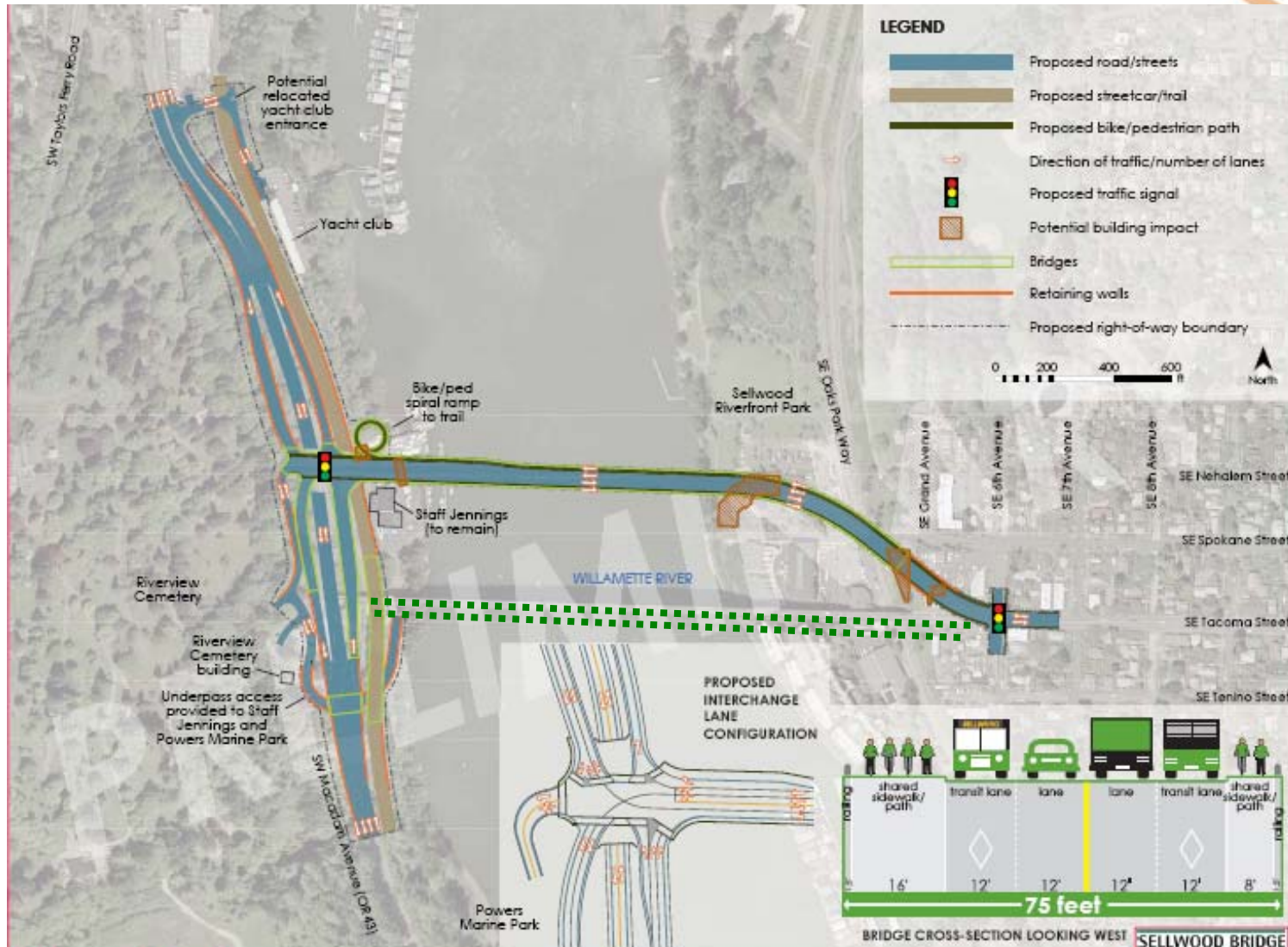
Alt. D East End

FIGURE 4-7
Alternative D ROW Building Impacts: East Side



Alternative E

- Bridge replacement to the north
- Thru Arch or Box Girder
- 2-lanes traffic, 2-lanes transit. 8' and 16' sidewalks
- Grade Separated Signalized interchange
- East end Signal
- Uses existing bridge as Detour



Alternative E: Replacement Bridge, Relocated to the North with Transit Lanes

Alt. E West End

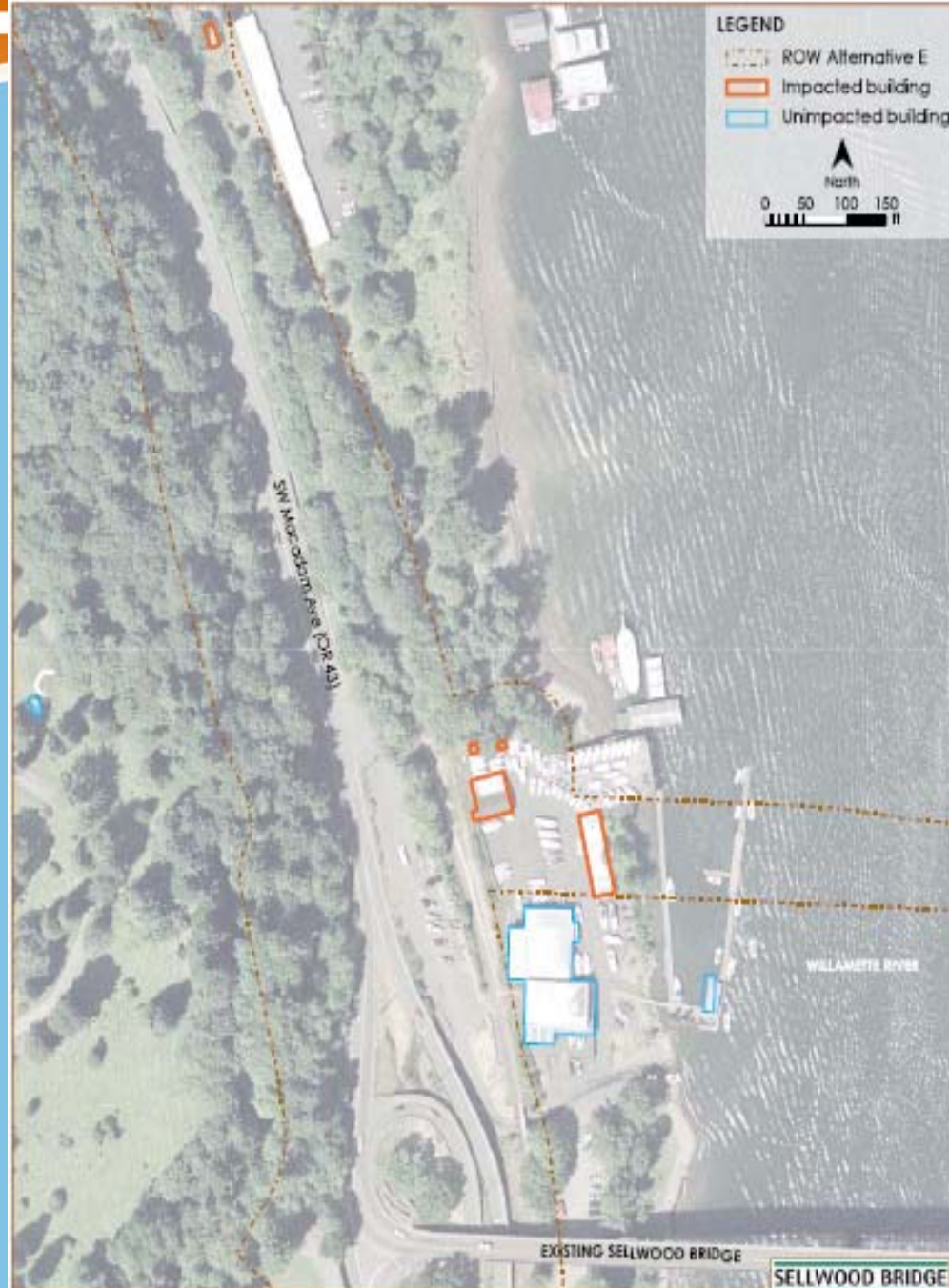
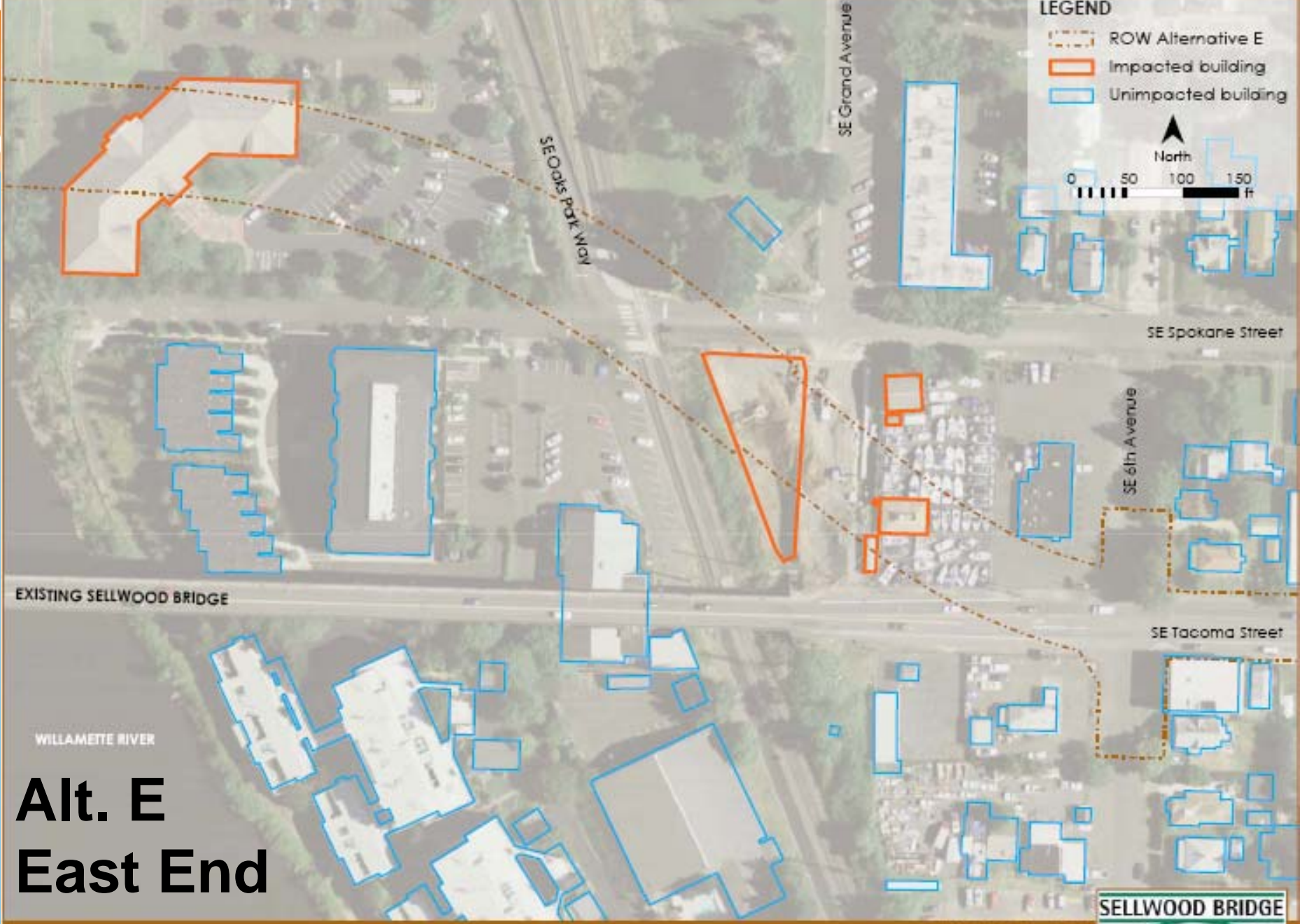


FIGURE 4-10
Alternative E ROW Building Impacts: West Side

Alt. E West End



FIGURE 4-14
Alternative E ROW Building Impacts: West Side, South



Alt. E
East End

FIGURE 4-9
Alternative E ROW Building Impacts: East Side



Thank You !

